

MAXIM SILENCER APPLICATIONS

MT41 – Straight Through, Low Pressure Drop Design – Expected Attenuation is 19 to 22 dBA

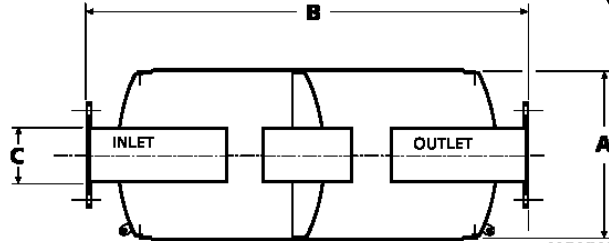
Use an MT41 for better than average silencing in areas where ambient noise is relatively low and back pressure requirements call for a low pressure drop silencer.

MT31 – Straight Through, Low Pressure Drop Design – Expected Attenuation is 16 to 19 dBA

Use an MT31 for average silencing in areas where some background noise is always present and effective but not complete silencing is needed and requirements call for a low pressure drop silencer.

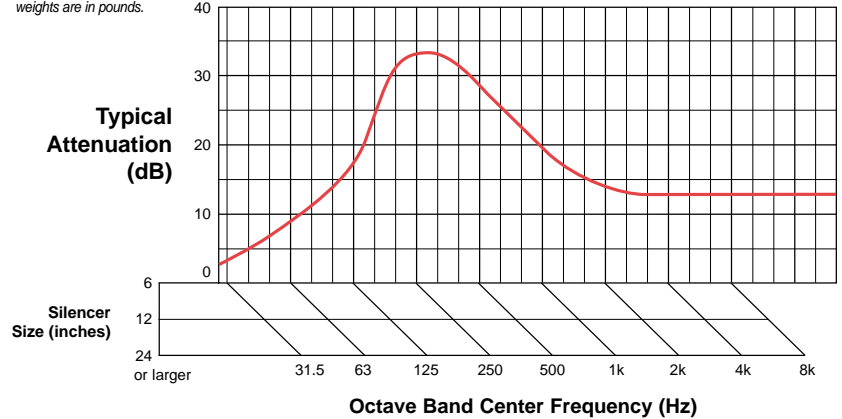
MT21 – Straight Through, Low Pressure Drop Design – Expected Attenuation is 13 to 16 dBA

Use an MT21 for silencing in areas where background noise is relatively high and silencing is needed and requirements call for a low pressure drop silencer.



Size	A	B	C	Est. Wt.
4"	16	54	4	115
5"	18	64	5	165
6"	22	72	6	250
8"	26	85	8	380
10"	30	103	10	655
12"	36	118	12	990
14"	40	117	14	1275
16"	45	134	16	1795
18"	50	152	18	2305
20"	54	175	20	2810
22"	60	185	22	3400
24"	64	208	24	4360
26"	68	228	26	5390
28"	72	253	28	6115
30"	78	262	30	7010

Note: Dimensions are in inches, weights are in pounds.



Typical Applications:

- Internal combustion engine intakes & exhausts
- Blower intakes & discharges
- Vacuum pump discharges

Features:

- Advanced acoustical design
- All welded construction & long service life
- Easily installed in any position
- Prime coated exterior finish

Optional Accessories:

- Explosion relief covers
- flexible connectors
- Companion flanges
- Cleanouts
- Various support arrangements
- Special paints

Sample Specification:

The silencer shall be a Maxim Model MT41 and shall be heavy wall, all weld construction, protected by a single coat of shop primer, and suitable for mounting in any position. The exhaust passage shall be straight through and no packing shall be used. The silencer shall be complete with the following accessories: