

### MAXIM SILENCER APPLICATIONS

**MT41 – Straight Through, Low Pressure Drop Design – Expected Attenuation is 19 to 22 dBA**

Use an MT41 for better than average silencing in areas where ambient noise is relatively low and back pressure requirements call for a low pressure drop silencer.

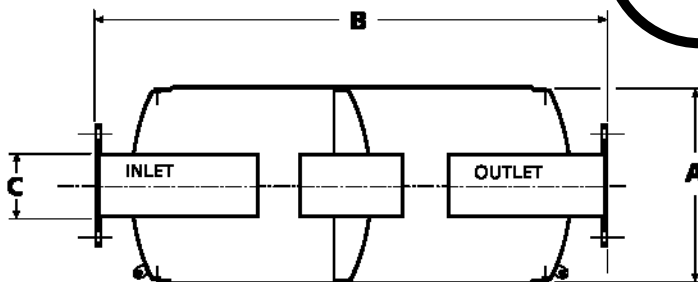
**MT31 – Straight Through, Low Pressure Drop Design – Expected Attenuation is 16 to 19 dBA**

Use an MT31 for average silencing in areas where some background noise is always present and effective but not complete silencing is needed and requirements call for a low pressure drop silencer.

**MT21 – Straight Through, Low Pressure Drop Design – Expected Attenuation is 13 to 16 dBA**

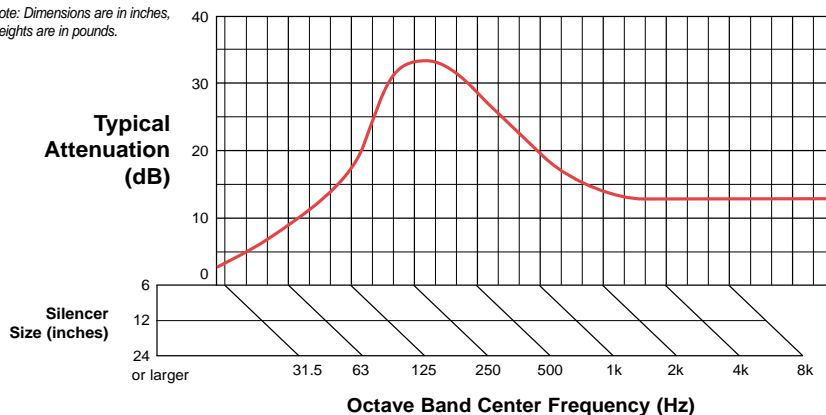
Use an MT21 for silencing in areas where background noise is relatively high and silencing is needed and requirements call for a low pressure drop silencer.

[www.mesamarine.com](http://www.mesamarine.com)



Size	A	B	C	Est. Wt.
4"	14	48	4	105
5"	16	55	5	115
6"	18	63	6	165
8"	22	76	8	280
10"	26	91	10	450
12"	30	109	12	730
14"	36	102	14	945
16"	40	119	16	1315
18"	45	127	18	1815
20"	50	144	20	2130
22"	54	161	22	2595
24"	60	165	24	3330
26"	64	183	26	3775
28"	68	200	28	4745
30"	72	216	30	5045

Note: Dimensions are in inches, weights are in pounds.



#### Typical Applications:

- Internal combustion engine intakes & exhausts
- Blower intakes & discharges
- Vacuum pump discharges

#### Features:

- Advanced acoustical design
- All welded construction & long service life
- Easily installed in any position
- Prime coated exterior finish

#### Optional Accessories:

- Explosion relief covers
- flexible connectors
- Companion flanges
- Cleanouts
- Various support arrangements
- Special paints

#### Sample Specification:

The silencer shall be a Maxim Model MT31 and shall be heavy wall, all welded construction, protected by a single coat of shop primer, and suitable for mounting in any position. The exhaust passage shall be straight through and no packing shall be used. The silencer shall be complete with the following accessories: